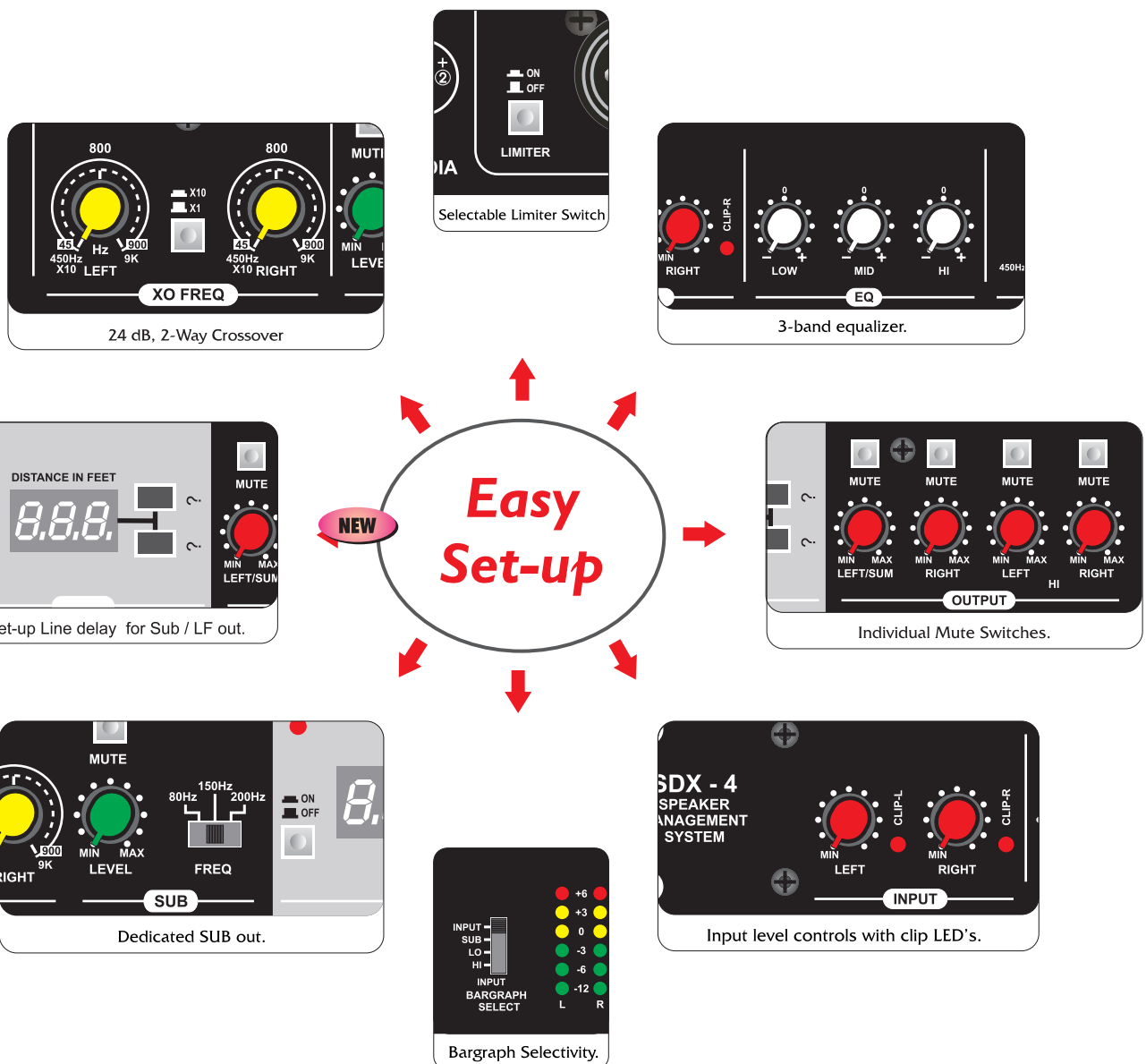


## SDX 4 Speaker Management System



**The Studiomaster Professional SDX - 4 Speaker Management System is an indispensable tool for precise set-up of multiple loudspeaker systems or arrays & Mid-size DJ Set-up's. The 2+1 way crossover, with a line delay on sub outputs, provides a low-cost & easy to operate speaker management system.**



### Input Section

- Input level controls with clip LED's.
- 3-band equalizer for all inputs and outputs.

### Output Section

- 1 X SUB out – male XLR, servo-balanced with level control.
- Left/SUM & Right Low out – male XLR, servo-balanced with individual level control.
- Left & Right HI out – male XLR, servo-balanced with individual level control.
- SUM/SUB switch – When released, Delay is assigned to SUB out, when pressed, Low outputs Left & Right are summed and routed to Left Low out and Delay is assigned to this out.
- Selectable Limiter on HI out for speaker protection.

### Crossover Section

- Crossover filter with roll-off characteristics 24 dB/octave.
- Self illuminated X10 crossover frequency selection switch. (45Hz-900Hz & 450Hz-9KHz).
- Dedicated SUB out with frequency selection (40, 80, 150, 200Hz) with 24dB/oct filter and level control.

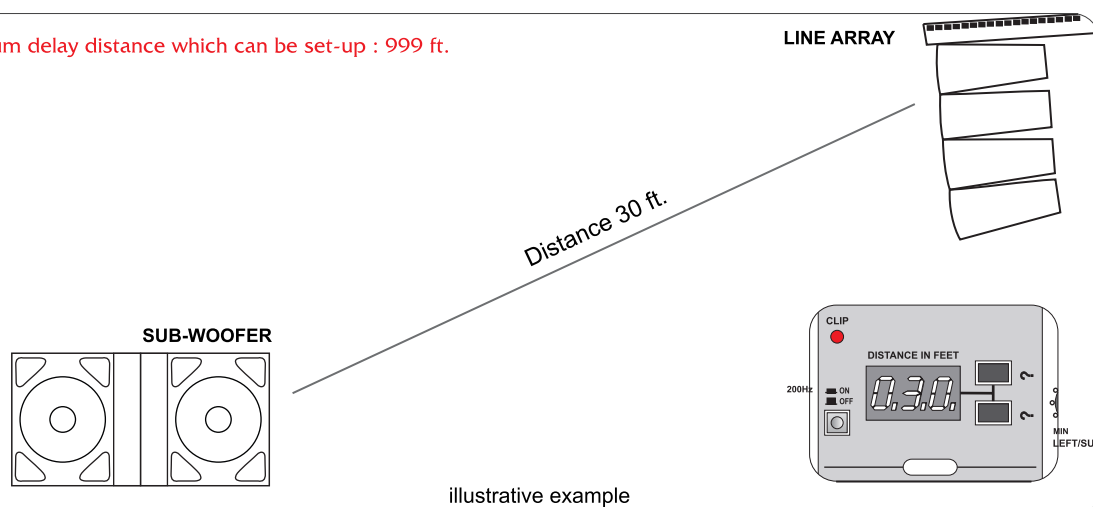
### Delay Section

- Self illuminated Delay on/off switch.
- Delay is converted to equivalent distance (ft) & it is displayed with 3-digit 7-segment display.
- Delay 885ms max. Equivalent distance, 999 feet @ 27 deg C.

### Other Features

- Assignable bargraph to Input, Sub out, Low & High Out levels.
- Blue "ON" led.
- Internal switch-mode power supply for maximum flexibility (150V - 240 V~).

Maximum delay distance which can be set-up : 999 ft.



Setting up of a line delay is subject to weather conditions such as temperature, humidity etc. The delay set-up on the SDX 4 should be fine tuned by listening.

**System is ideal for flying Budgetary 2 WAY line array or 2 WAY high power point source systems along with floor positioned sub-woofers.**